



Saltford C of E Primary

60TH ANNIVERSARY



The History of Saltford School

The first school in Saltford was founded in the middle of the 19th Century. It was called Queen's School and was held in the building which is now St Mary's Church hall. This was a Church school and our links with St Mary's Church remain close and important.

At first there was just one class in this school but, when numbers reached 108, a second class was started! Attendance was not always good. This was especially so in the summer when many children would need to help their families with the harvest in what was still a very rural community.

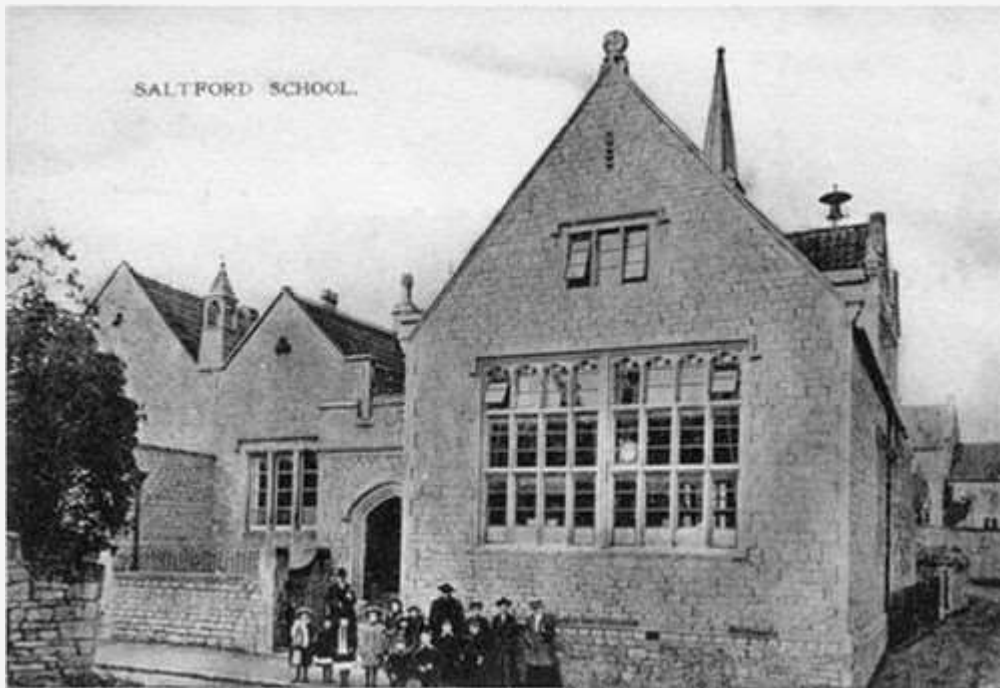
The early curriculum was mainly grammar, spelling, arithmetic and geography. Photographs from the early 20th Century show a uniform of pinafores for the girls and Eton collars for boys.

By 1960 the old building was becoming too small for the growing numbers of children and the infants were relocated to Ellsbridge House. Our current school building was built in 1962 but the four 'temporary' classrooms erected the following year remained in use until our new extension was opened in 2017.



Some historic photos of old Saltford School

These photos were taken in the early 1900s





Saltford School, 1914.



Headmistress Miss Hockey and her pupils, Saltford School, 1932.



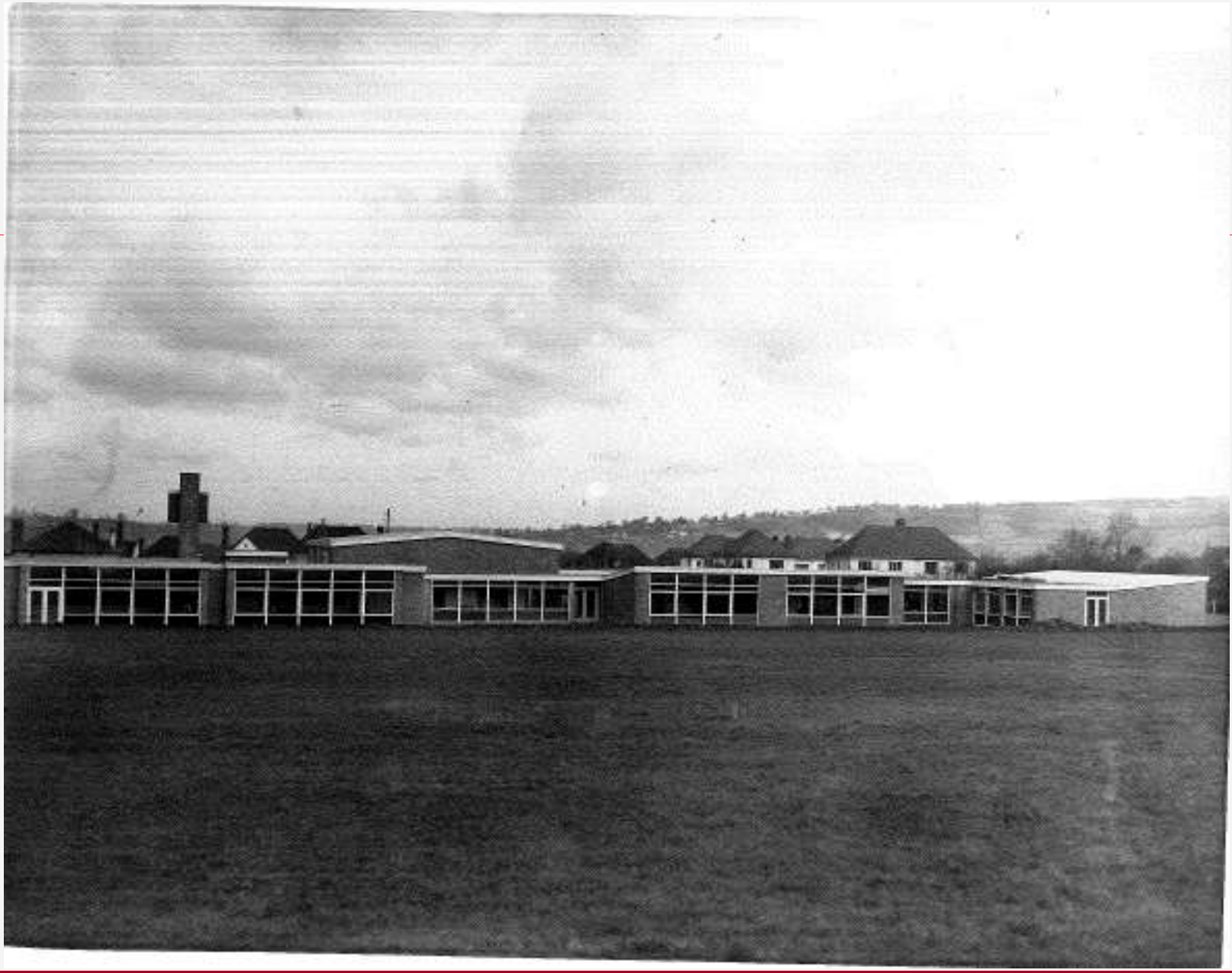
School in the Church Hall 1960





Original School Buildings







Opening ceremony of the new building here





Saltford School has always loved singing!







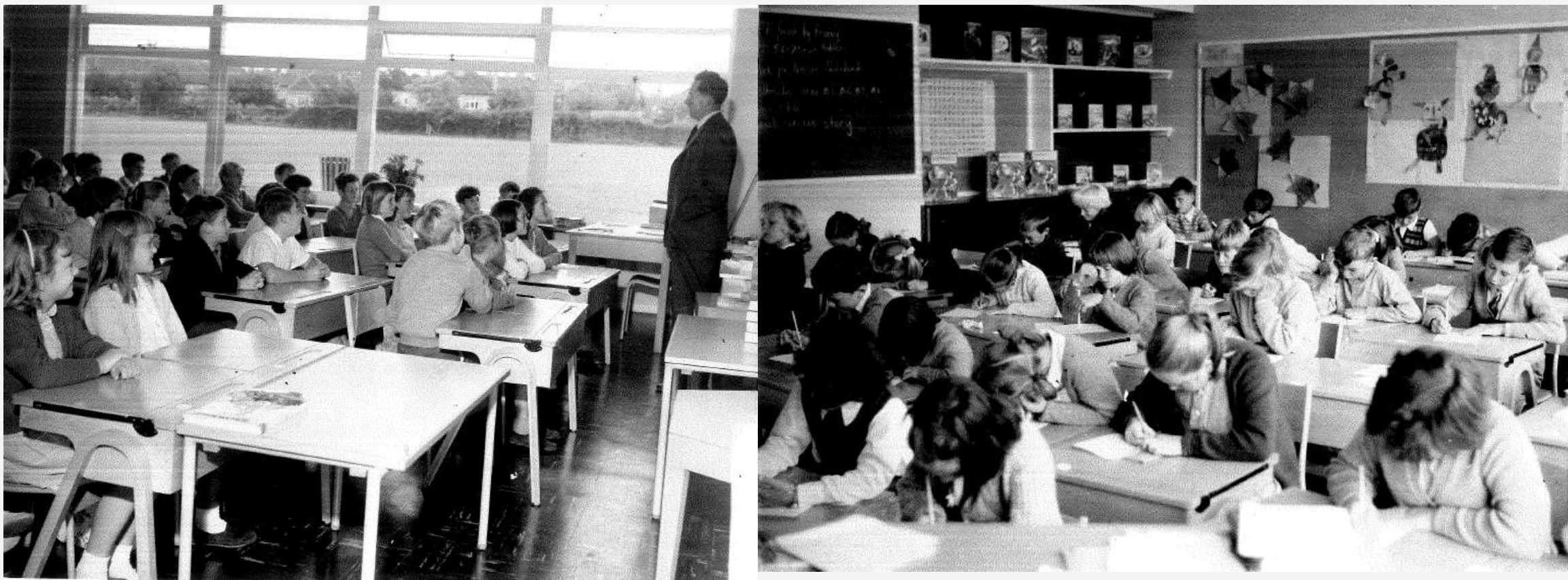
School in the 1970s





School in the 1970s











PE in the hall 1970s





School in the 1980s





2004











New building 2016





Site manager's building arrives!





Lime Tree removed

























Mrs Hutchcroft – first Headteacher on this site. Here at her 25th Anniversary.





Miss Brannan/Mrs Golding





Mr Pine





Mr Rennie





Miss Elliot/Mrs Sage





Original staff





Staff 1986





Staff 2002





Staff 2014





Children 1980s





Can you spot one of our teachers?





1990s – spot another teacher!





And another teacher!



2007



St. Mary's Church





WMAT/Futura

In 2016 We joined the Wellsway Multi-Academy Trust, which later became known as Futura Learning Partnership.





More about the school

<https://www.saltfordschool.org.uk/our-community/#school-history>

<https://www.saltfordenvironmentgroup.org.uk/history/history005-20Cp3.html>

<https://www.saltfordschool.org.uk/assets/uploads/documents/about%20us/Saltford%20C%20of%20E%20Primary%20School%20-%20All%20About%20Us.pdf>

<https://www.saltfordschool.org.uk/about-us/#prospectus>

